



## REGIONAL SPECIALISED METEOROLOGICAL CENTRE -TROPICAL CYCLONES, NEW DELHI TROPICAL WEATHER OUTLOOK

DEMS-RSMC TROPICAL CYCLONES NEW DELHI DATED 10.07.2025

**TROPICAL WEATHER OUTLOOK FOR THE NORTH INDIAN OCEAN (THE BAY OF BENGAL AND THE ARABIAN SEA) VALID FOR THE NEXT 168 HOURS ISSUED AT 0600 UTC OF 10.07.2025 BASED ON 0300 UTC OF 10.07.2025.**

### BAY OF BENGAL:

Yesterday's **low pressure area** over Gangetic West Bengal & adjoining Jharkhand persisted over the same region at 0000 UTC and became less marked at 0300 UTC of today, the 10th July 2025. However, the associated cyclonic circulation lay over south Jharkhand & neighbourhood and extended upto 5.8 km above mean sea level.

Scattered to broken low and medium clouds with embedded intense convection lay over westcentral Bay of Bengal off Andhra Pradesh coast and southeast Bay of Bengal. Scattered low and medium clouds with embedded moderate to intense convection lay over the rest of the Bay of Bengal and Andaman Sea.

### \*PROBABILITY OF CYCLOGENESIS (FORMATION OF DEPRESSION) DURING NEXT 168 HRS:

24 HOURS	24-48 HOURS	48-72 HOURS	72-96 HOURS	96-120 HOURS	120-144 HOURS	144-168 HOURS
NIL	NIL	NIL	NIL	NIL	NIL	NIL

**\*NOTE: EVERY 24HR FORECAST IS VALID UPTO 0300 UTC (0830 IST) OF NEXT DAY**

### ARABIAN SEA:

Scattered low and medium clouds with embedded moderate to intense convection lay over south Arabian Sea south of latitude 10.0 °N and Maldives area. Scattered low and medium clouds with embedded weak to moderate convection lay over Gulf of Cambay & the rest of the Arabian Sea and the Lakshadweep Islands area

### \*PROBABILITY OF CYCLOGENESIS (FORMATION OF DEPRESSION) DURING NEXT 168 HRS:

24 HOURS	24-48 HOURS	48-72 HOURS	72-96 HOURS	96-120 HOURS	120-144 HOURS	144-168 HOURS
NIL	NIL	NIL	NIL	NIL	NIL	NIL

**\*NOTE: EVERY 24HR FORECAST IS VALID UPTO 0300 UTC (0830 IST) OF NEXT DAY**

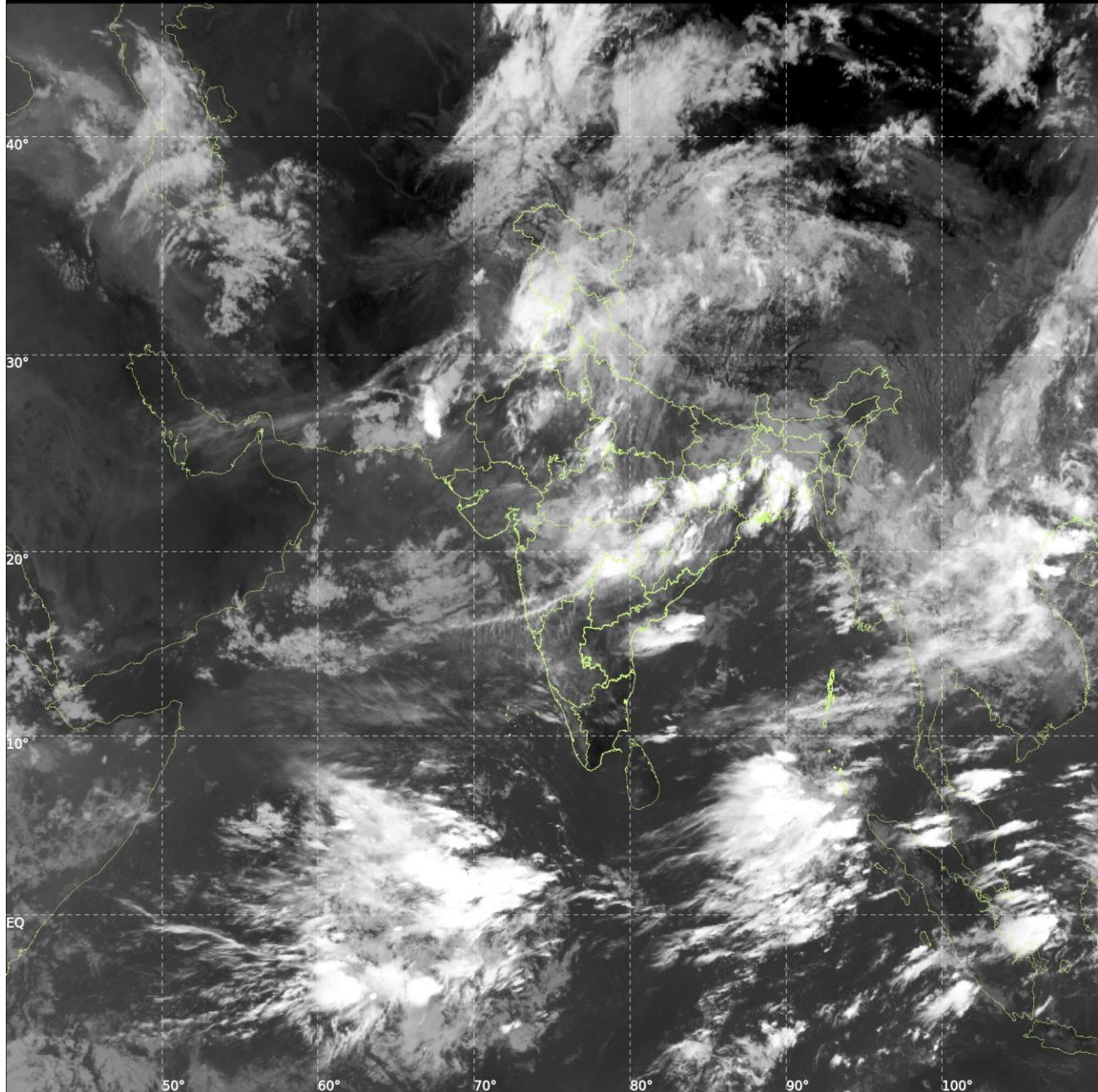
**REMARKS:** NIL



**INSAT-3DS IMG, Thermal Infrared1 Count @ 10.83  $\mu$ m**  
**GMT:10-07-2025/(0300-0327) IST:10-07-2025/(0830-0857)**  
**L1C MERCATOR (LINEAR STRETCH: 1%)**

410

890



Cloud distribution: (a) Isolated: <25%, Scattered:25-50%, Broken: 51-75%, Solid:>75%, Convection Intensity: (a) Weak: Cloud Top Temperature(CTT)>-25°C,(b)Moderate:CTT:-25°Cto-40°C,(c)Intense:CTT: -41°Cto -70°Cand(d)Very Intense::Less than -70°C  
PROBABILITYOFCYCLOGENESIS(FORMATIONOFDEPRESSION):NIL:0%,LOW:1-33%,MODERATE:34-66%ANDHIGH:67-100%  
ThisisguidanceBulletinforWMO/ESCAPPanelMembercountries.VisitrespectiveNationalwebsitesforCountryspecificBulletins